

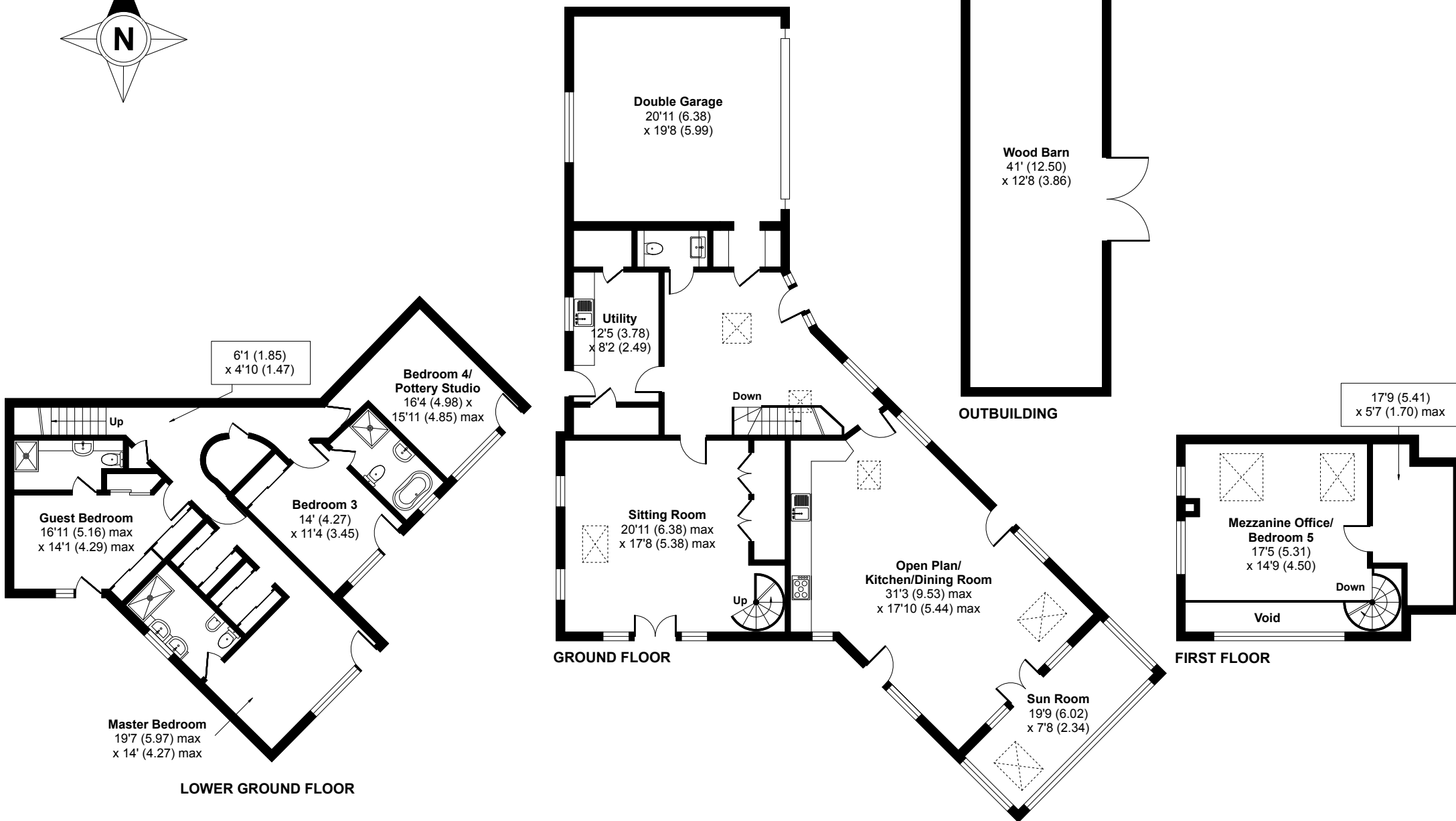
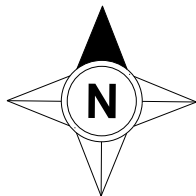
Kea, Truro, TR3 6AJ

Approximate Area = 3309 sq ft / 307 sq m (includes garage and excludes void)

Outbuilding = 519 sq ft / 48 sq m

Total = 3828 sq ft / 355 sq m

For identification only - Not to scale



Floor plan produced in accordance with RICS Property Measurement Standards incorporating International Property Measurement Standards (IPMS2 Residential). © nitchecom 2021. Produced for Rohrs and Rowe. REF: 711634